

32" SmartLine Display – Flexible Design and Size

32"



- Adaptive frame design – suitable for various sizes of displays
- TrueFlat display solution - customized modifications possible
- Design available on long-term
- LED panel for brilliant colours and yet with low power consumption

Canvys has developed a 32" display with the objective of creating a stylish as well as sturdy device which is available on long-term and can be adapted to our customers' application requirements in most any way.

Being equipped with an LED Panel the 32" display of our **SmartLine** series renders excellent image quality at low power consumption and at the same time has an attractive shape. We recommend our **SmartLine** for installations not only within the entertainment and information industry but also within the medical sector as well as for any kind of application demanding a slim and elegant design.



**Preliminary
project base only!**

32"

Features & Data

Adaptive frame design (Display sizes on request)

The display's framework is made of aluminum. This light material made from strand casted profiles can be used to manufacture housings in variable sizes and even allows us to shape the bezel corners according to our customers' ideas. Thanks to the aluminum being chromated the frame is well protected against corrosion. As to the colour, Canvys can fulfill individual wishes by using the corresponding powder coating.

Optimum adjustment for individual applications

In Canvys you will find an expert in visual technologies on one hand and a reliable business partner on the other. Since we have our own development department we are able to cooperate closely with your technicians and find the optimum solution for your needs. Our displays' flexible design allows for numerous options and customized adjustments such as special mounting holes, PC integration or fixation points for a pivot arm. Different types of protection panes - made of glass, polycarbonate or acryl depending on surrounding conditions and operating environment - can be fitted into the frame so smoothly that virtually no dirt can collect. Due to this TrueFlat integration the resulting front surface is completely even, IP-protected and hence easy to clean (Touch functions on request).

Long-term availability in "Form, Fit, Function"

Canvys is an established provider of solutions for customized industrial, medical and large-screen displays. An important advantage for dealers and OEM manufacturers is the fact that we are able to supply most components (panels, controllers and power supplies, in particular) on long-term.

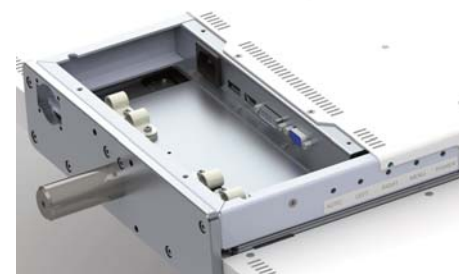
Last but not least we wish to draw your attention to our most reliable 32" - 46" CP-Public-Displays, a series of monitors which have been successfully implemented in various configurations over the past few years.

Would you like to get more information? We'll be glad to answer any questions you might have!

Model / Type	Canvys 32" SmartLine
Screen size	32" / 81.28 cm
Active area (H x V)	698.4 x 392.85 mm
Resolution	1920 x 1080 / HDTV
Pixel pitch (H x W)	0.364 mm
Display colors	16.7 Mio. RGB
Brightness	350 cd/m ² w/o touch
Contrast ratio	3000:1 typ.
Response time	6.5 ms typ.
Viewing angle: h / v	178° / 178° (CR=10)
I/O Ports	D-Sub 15pin (analog), DVI-D, DP on req: HDMI, Video & S-Video
Power consumption	max. 60 W
MTBF backlight	min. 30.000 h
Dimensions (W x H x D) w/o rotation arm adaption	758.4 x 457.4 x 80.1 mm
Weight	max. 15 kg
Operating temperature	0 °C to +40 °C
Storage temperature	-20 °C to +60 °C
Options	Protection shield, touch sensor, remote control, different colours, customer logo
Misc.	Speaker 2x 30 W, LED, slim, light weight, True Flat, protection shield, cabling accessible - but covered
Housing	Aluminium, colours, structure on request
Approval	CE, UL listed components
Mounting	VESA 200
Power Input	internal PS 24 V



Rear view



View of I/O ports and mount position of the rotation arm